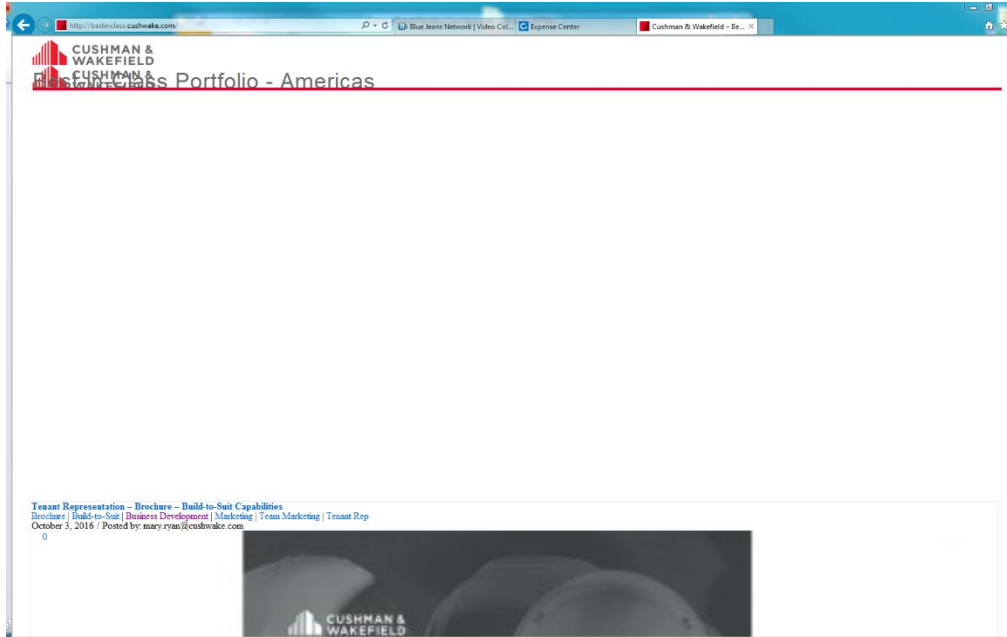



Best in Class Site 'Fix'

<http://bestinclass.cushwake.com>

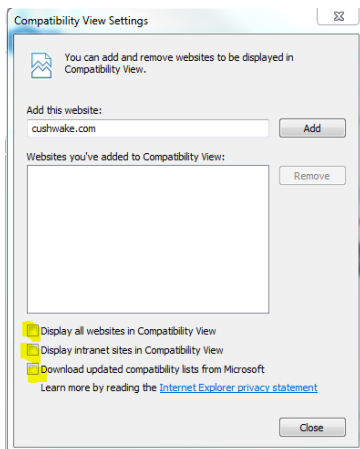
If a user can access the site in IE but the site renders similar to the screen shot below, please have them perform the following steps:



1) Open the site in IE

2) Go to the gear icon , then select Compatibility View Settings

3) Make sure that all check boxes have been unchecked



4) Hit close and refresh your browser