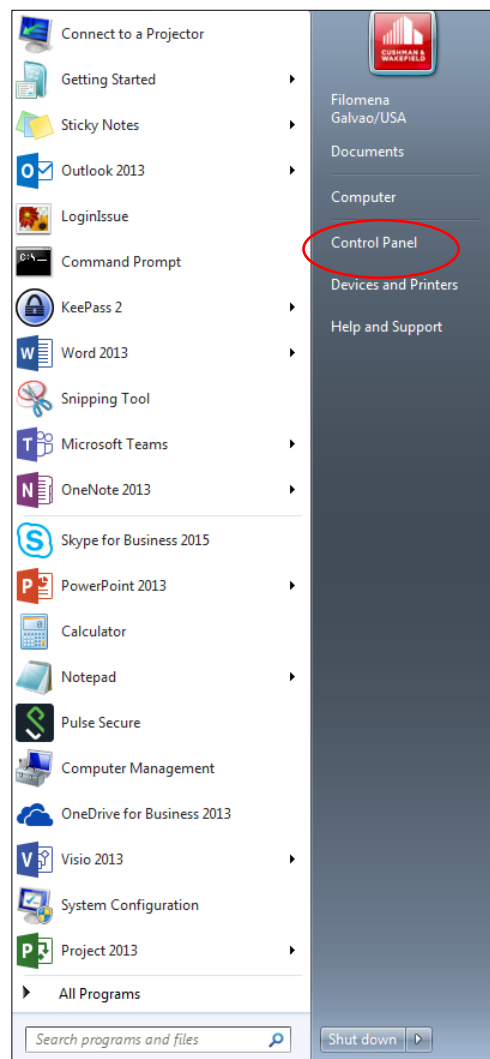


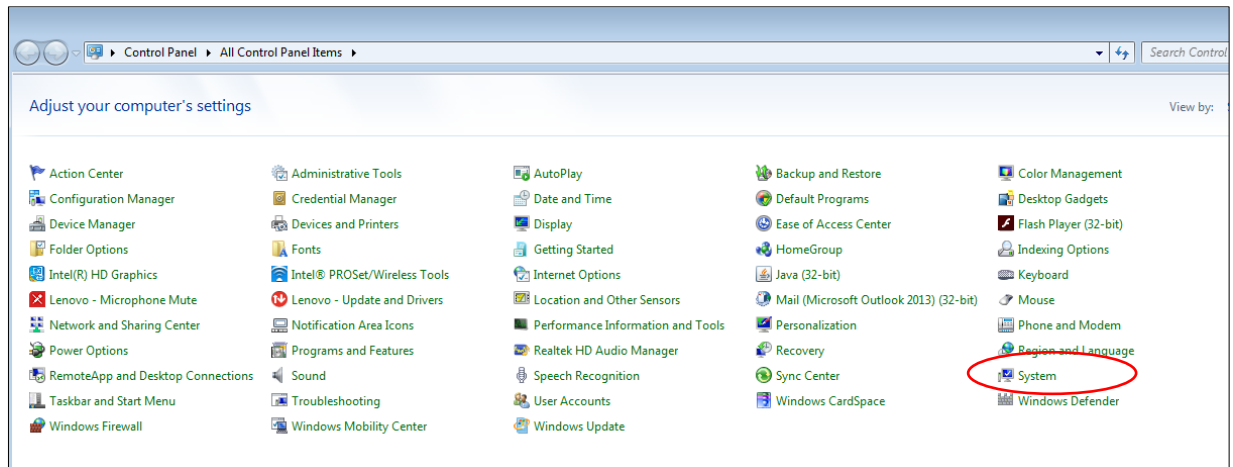


Identify your computer name

This document shows the process for identifying your computer name on your Cushman & Wakefield computer. Please contact the Service Desk with technical questions or concerns.

Step 1: Click on your **Start** icon in the bottom left-hand corner of your desktop screen. Locate **Control Panel** and then click on **System** or **System and Security**.





Step 2: Locate the **Computer name, domain, and workgroup settings** section. Find the **Full computer name** line to identify your computer name.

